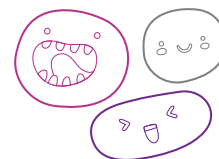


OUT OF SCHOOL HOURS CARE

Vacation Care | 17 - 28 April

IN-HOUSE EXCURSION/ INCURSION	FULL FEE		CCS REDUCED FEE*	
	FULL FEE		CCS REDUCED FEE*	



WEEK 1

Monday 17 April	Tuesday 18 April	Wednesday 19 April	Thursday 20 April	Friday 21 April
Outcomes:	Outcomes:	Outcomes:	Outcomes:	Outcomes:

WEEK 2

Monday 24 April	Tuesday 25 April	Wednesday 26 April	Thursday 27 April	Friday 28 April
Outcomes:		Outcomes:	Outcomes:	Outcomes:

Whitefriars OSHC

45 Beaufort Street, Woodville Park, SA 5011

Michael Pope

0459 988 149

OSHC Support Team

P 08 8200 2516

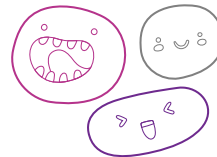
E oshc@ymcasa.org.au

f /YMCA SA OSHC



OUT OF SCHOOL HOURS CARE

Whitefriars OSHC



Important information:

- OSHC will be open from 7:00am – 6:00pm, please sign in and out between these times.
- All bookings must be received by Monday 10th April to avoid a \$3 casual fee.
- Cancellations must be made two weeks prior to the date of requested care to avoid payment.
- Please send children in appropriate clothes for the activity they will be participating in.
- Sun Smart guidelines are followed so please ensure a hat is worn and no singlets.
- Sunscreen is provided. If your child is sensitive to sunscreen, please provide your own.
- Please review our terms and conditions online for our fee and policy information.
- Please provide morning tea, lunch and a drink bottle every day unless stated otherwise.
- Please note that we are a NUT-aware centre.
- Breakfast and afternoon tea will be provided.
- Handheld electronic devices are not permitted at the centre unless specified in the day's description, communication devices are allowed.
- We welcome feedback and suggestions at any time, please see your centre staff
- By making a booking you are agreeing to pay the fees through your direct debit account in addition to normal OSHC bookings
- Please inform the service if your child suffers from travel sickness.
- Programmed activities are subject to change.

*Typical fee after subsidy is applied

While bus drivers (in SA) are exempt from ensuring passengers under 16Y are restrained, YMCA OSHC will make every effort to ensure the safety of all children by using seat belts that are supplied and be guided by our policies and transport risk assessment.

Learning outcomes:



OUTCOME 1

Children have a strong sense of identity



OUTCOME 2

Children are connected & contribute to their world



OUTCOME 3

Children have a strong sense of wellbeing



OUTCOME 4

Children are confident and involved learners



OUTCOME 5

Children are effective communicators



Book your session via the Xplor Home App

Visit sa.ymca.org.au/OSHC for more information